

SL.NO	DESCRIPTION	AREA m ²
1	SLIPWAY & REPAIR FACILITIES	450
2	REPAIR SHOP	150
3	ICE PLANT	150
4	FUEL STATION	150
5	NAVAL SHOP COMPLEX	600
6	PASSENGER WAITING HALL	1480
7	WAREHOUSE	2910
8	OPEN STORAGE	1000
9	CUSTOM BUILDING	100
10	SECURITY BUILDING	50

LEGEND	DESCRIPTION
	CHMB CHANNEL MARKER BOUY - STAR BOARD SIDE CONICAL BOUY PAINTED GREEN. PORT SIDE PAINTED RED
	BWL BREAKWATER LIGHT
	BCL BERTH CORNER LIGHT

NOTES:
 1. ALL DIMENSIONS ARE IN METRES.
 2. ALL LEVELS ARE IN METRES AND ARE WITH RESPECT TO CHART DATUM (CD).
 ALL COORDINATES ARE GIVEN IN METRES REFERRED TO UNIVERSAL TRANSVERSE MERCATOR (UTM) PROJECTION, SPHEROID (WGS 1984), ZONE 43.

DRAWING NO.	TITLE	REV.	DDMMYY DATE	STATUS	DESCRIPTION	DES.	DRN.	INIT. CHECKED	SIGN. APPROVED
		G	01 12 23	4	FIRST SUBMISSION	ASA	AST	ASA	PRJ
REVISIONS									
STATUS CODES 1- PRELIMINARY 2- FOR APPROVAL 3- GOOD FOR CONSTRUCTION 4- FOR REPORT									

CLIENT: COCHIN PORT AUTHORITY

PROJECT: PORT LED DEVELOPMENT WORKS AND ALLIED FACILITIES, LAKSHADWEEP

TITLE: ANDROTH DEVELOPMENT PLAN

REPORT NO: RP006

PROJECT NO: C1221104

COP: -

SCALE: 1:4000

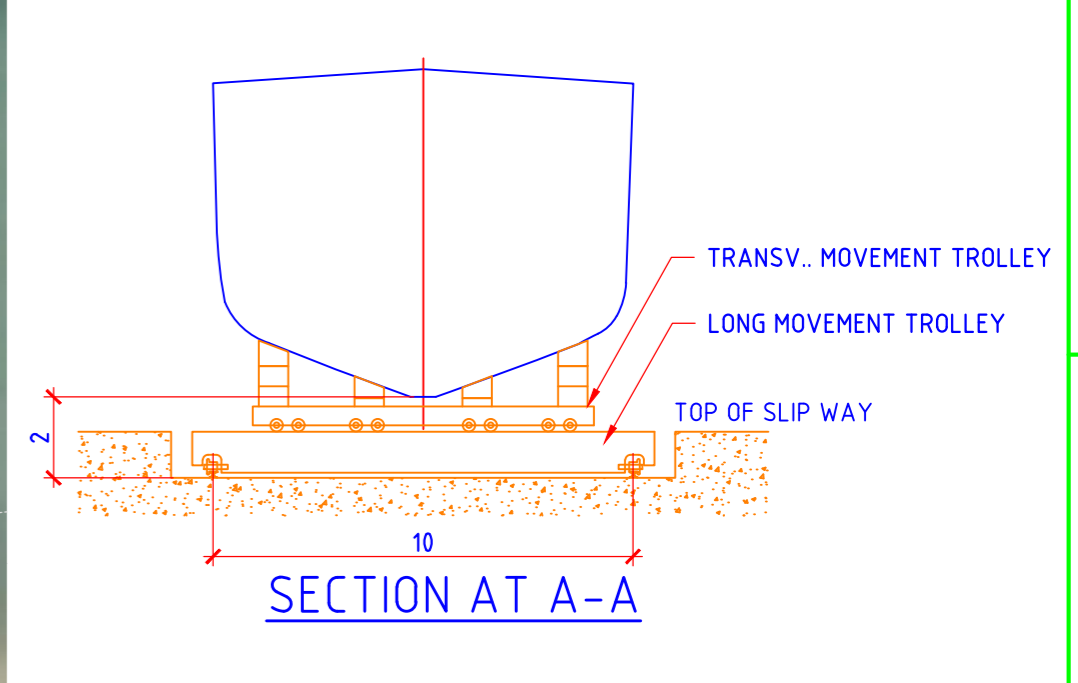
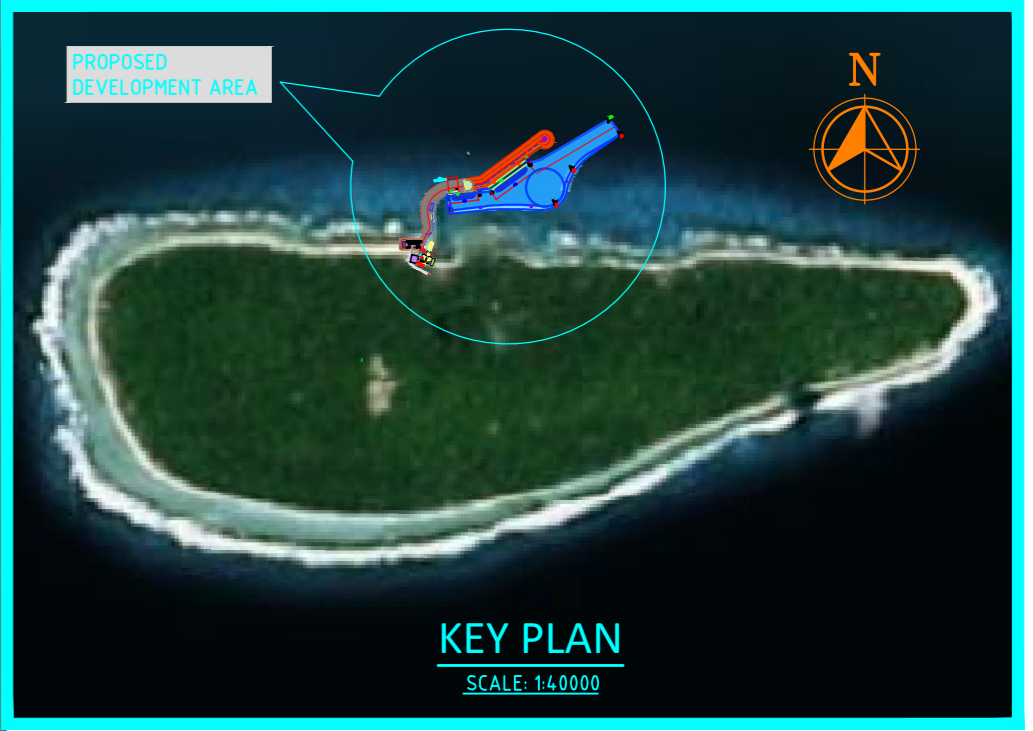
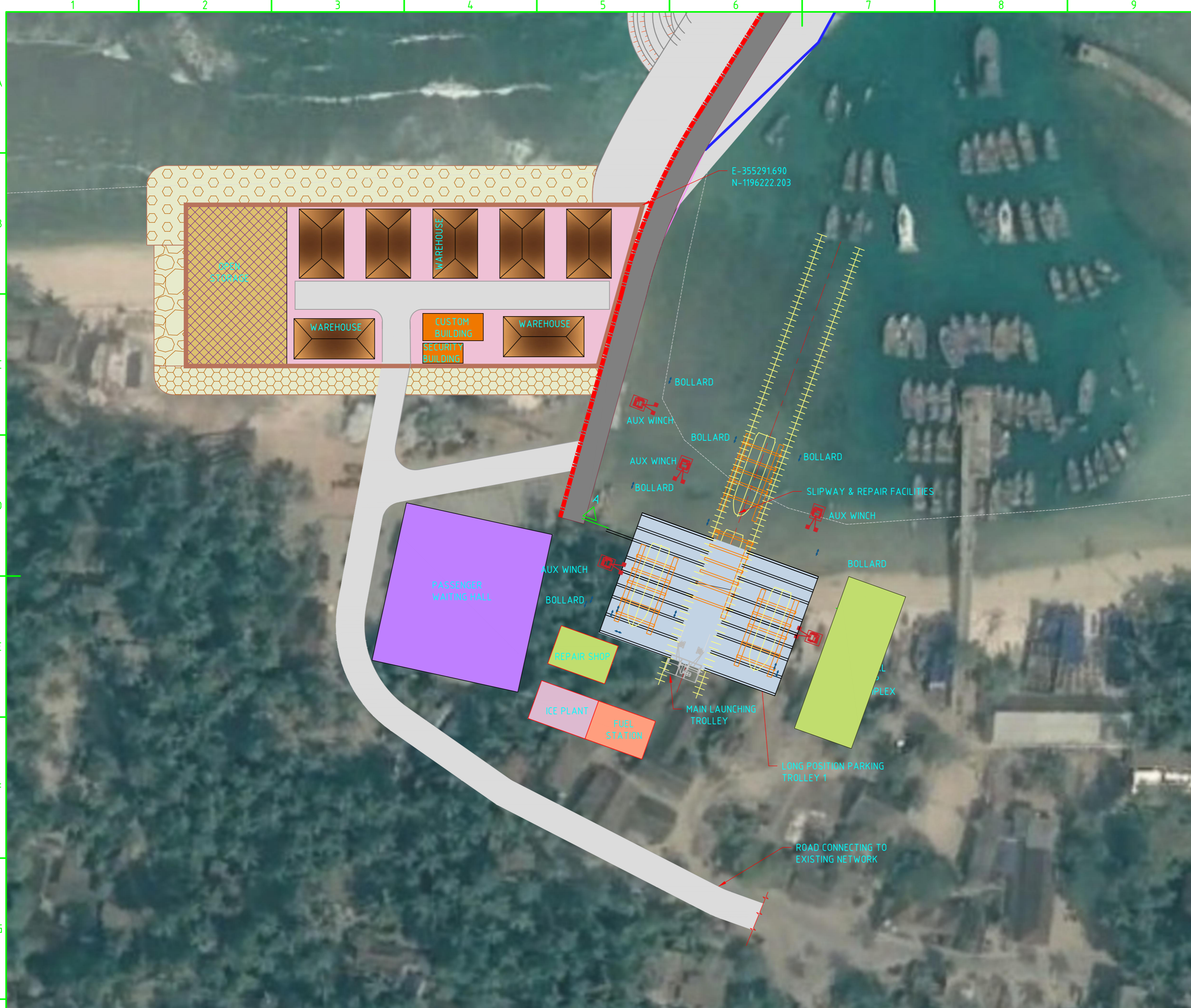
DRAWING NO: FD0801

REV: G

L&T Infra Engineering

AUTO PATH: L:\PORTS\2022\1221104 - RP - DWG OF JETTIES - LDWP\WORKING DRAWINGS\DRW_RP006 - RP - ANDROTH - DEVELOPMENT PLAN.DWG

plot scale 50mm



NOTES:
 1. ALL DIMENSIONS ARE IN METRES.
 2. ALL LEVELS ARE IN METRES AND ARE WITH RESPECT TO CHART DATUM (CD).
 ALL COORDINATES ARE GIVEN IN METRES REFERRED TO UNIVERSAL TRANSVERSE MERCATOR (UTM) PROJECTION, SPHEROID (WGS 1984), ZONE 43.

DRAWING NO.	TITLE	REV.	DDMMYY DATE	STATUS	DESCRIPTION	DES.	DRN.	INT. CHECKED	SIGN. APPROVED
		G	01 12 23	4	FIRST SUBMISSION	ASA	AST	ASA	PRJ
REVISIONS									
STATUS CODES 1: PRELIMINARY 2: FOR APPROVAL 3: GOOD FOR CONSTRUCTION 4: FOR REPORT									
REFERENCE DRAWINGS									

CLIENT: COCHIN PORT AUTHORITY		PROJECT NO: C1221104
PROJECT: PORT LED DEVELOPMENT WORKS AND ALLIED FACILITIES, LAKSHADWEEP		COP: -
TITLE: ANDROTH LAND SIDE FACILITIES		SCALE: 1:4000
L&T Infra Engineering		DRAWING NO: FD0802
L&T Infrastructure Engineering Ltd.		REV: G

PATH: REFER BOTTOM LEFT CORNER OF THE DRAWING
 ORIGIN: SIZE: A2
 DATE: 01/12/23
 DRAWN BY: ASA
 CHECKED BY: ASA
 APPROVED BY: PRJ
 L&T Infra Engineering Ltd. is a member of the L&T Group of Companies. All rights reserved. No part of this drawing may be reproduced or transmitted in any form or by any means, electronic or mechanical, including photocopying, recording, or by any information storage and retrieval system, without the prior written permission of L&T Infra Engineering Ltd.

AUTO PATH: L:\PORTS\2023\12\21104 - RP - DWP OF JETTIES - LDWP\WORKING DRAWINGS\DRP_RP006_RIG_ANDROTH_FINAL\DRP006-AS-ANDROTH-LANDSIDE-FACILITIES.DWG